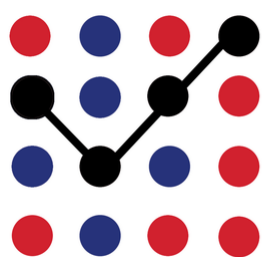


Talkin' Testing

— DIVISION OF TEACHING AND LEARNING | OCTOBER 2021 —

— ALL GOURD!; FALL TESTING COMPLETE —



WINTER WINDOW

JANUARY, 2022 (JANUARY 3-28)

CIVICS EXAM - STUDENTS IN GRADE 07 AND HIGHER
ILLUMINATE FASTBRIDGE - HIGH SCHOOL MATH/SECONDARY ELA
I-READY DIAGNOSTIC - GRADES KG-08 (EXCLUDING ALP 8)
ISTATION GROWTH MONITORING - GRADE KG-05 READING



WILL YOU APPLE-LAUD OUR DRAFT KG-05 REPORT CARDS?

Our standards-based report card team reviewed feedback and state standards over the past several months to create DRAFT report card standards that will be updated this month in our Skyward grade books. There are two different formats in which you can review these DRAFT standards:

- This [Feedback on Current Report Card Templates](#) Google Doc now has all of our DRAFT standards language and the new proposed grading scale;
- Additionally, we have also added the DRAFT standards to a [Google Sheet so that we can look at the vertical articulation/alignment of standards](#) (e.g. do we have a progression of expectations in Number and Operations in Base-10?). There is a filter icon at the top of each column to toggle on/off grade levels and headings. The draft performance levels (grades) are on a separate tab at the bottom.

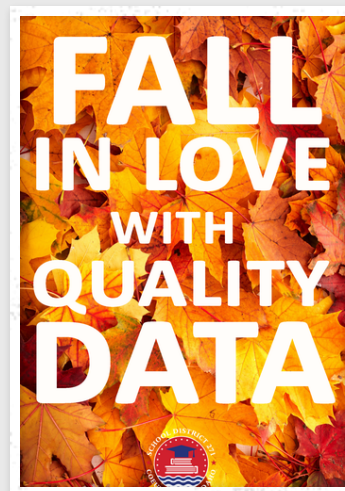
We'd [love to have your feedback](#) before October 15th so that we can refine the standards and re-open gradebooks. Our timeline is below and further detailed in the form.

YOU REALLY AUTUMN USE YOUR FALL SCREENING RESULTS

Fall conferences are around the corner and you are building upon your strong relationships with your students to guide their best learning. Now, with the results from your fall assessments, you can *squash* your end-of-year goals by using your data to drive your instructional decisions, ameliorate deficiencies, and close gaps.

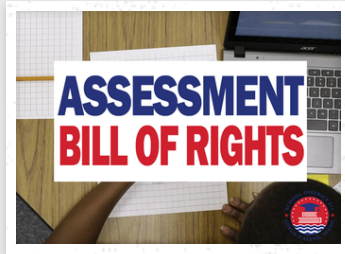
Indeed, understanding current and historical academic and behavioral data is paramount to influencing the learning cycle. But, we should remember that a singular data point doesn't provide definitive information about our students. You may need to confer, use additional evidence such as student work, or additional assessments.

Your [Homeroom](#) access provide a single platform to see student performance in a variety of lenses and now includes the ability to create **individualized student support plans** for assessments, behaviors, attendance, or coursework, and provides a platform for monitoring progress toward goals - whether they would be in two weeks or two months. Take a look at the video below if you'd like to get started or review these step-by-step guides for both [individual](#) or [group plans](#).



CDASchools: Introducing Student Intervention Plans 06-October, 2021





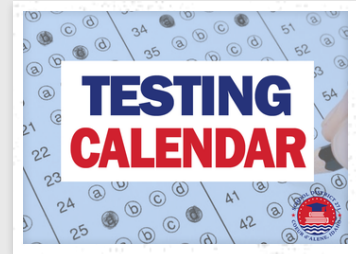
ASSESSMENT BILL OF RIGHTS

We believe that assessment, when properly applied, serves as one of the most powerful tools at a teacher's disposal. This [Bill of Rights](#) will be included in all assessment presentations and parent communications.



ASSESSMENT PLAN

Our Board-approved [Comprehensive Assessment Plan](#) outlines our current and future goals around testing and how we will use these results to inform individualization and instructional decisions.



TESTING CALENDAR

A living testing calendar can be found at MyCDASchools > [Assessments](#), on the district website at > www.cdaschools.org > Departments > [Assessments](#) or on Schoology by clicking the [calendar icon](#) in the upper-right corner of any page.

A-OAK-AY: COPIES COMING!

Color copies of the following documents have been sent to our district's Print Shop and should be delivered to buildings within one week:

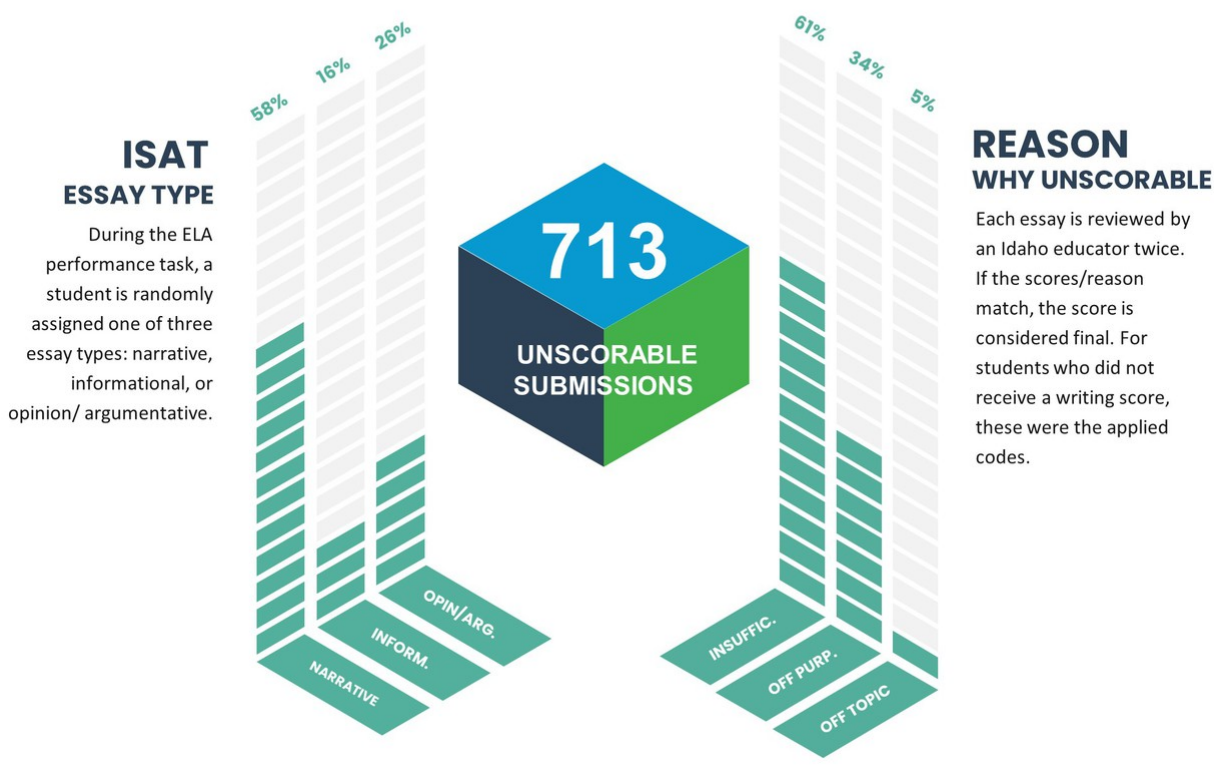
- IStation Student Summary Handout;
- i-Ready Family Report; and
- FastBridge aReading and aMath family reports

Documents will be packaged by building, teacher > grade level > student last name and there will be an instructional cover sheet for office staff.



ISAT WRITING COMPARISON

COEUR D'ALENE PUBLIC SCHOOLS | 2020-2021 SCHOOL YEAR



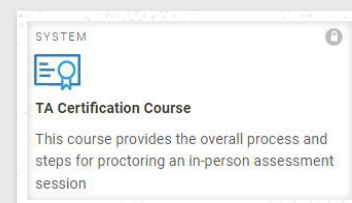
DID THEY CHAI? HUNDREDS OF STUDENTS WITH UNSCORABLE WRITING SAMPLES ON ISAT

Just over 10% of our students taking the ISAT English language arts/literacy assessment last year were not able to have their writing sample scored based on the [assessment rubrics](#) for their particular essay type. A majority of our students' submissions were unscorable because they didn't provide sufficient information or citations from the prompt. If you're interested in knowing more information, your building administrator has been provided more details including a list of students and reasons.

Consider implementing the [Smarter Balanced annotated writing tool](#), which provides samples of writing that have been scored poor (1) to high (4) in a variety of essay types.

THERE ARE A LATTE TOOLS TO PREPARE FOR ISAT

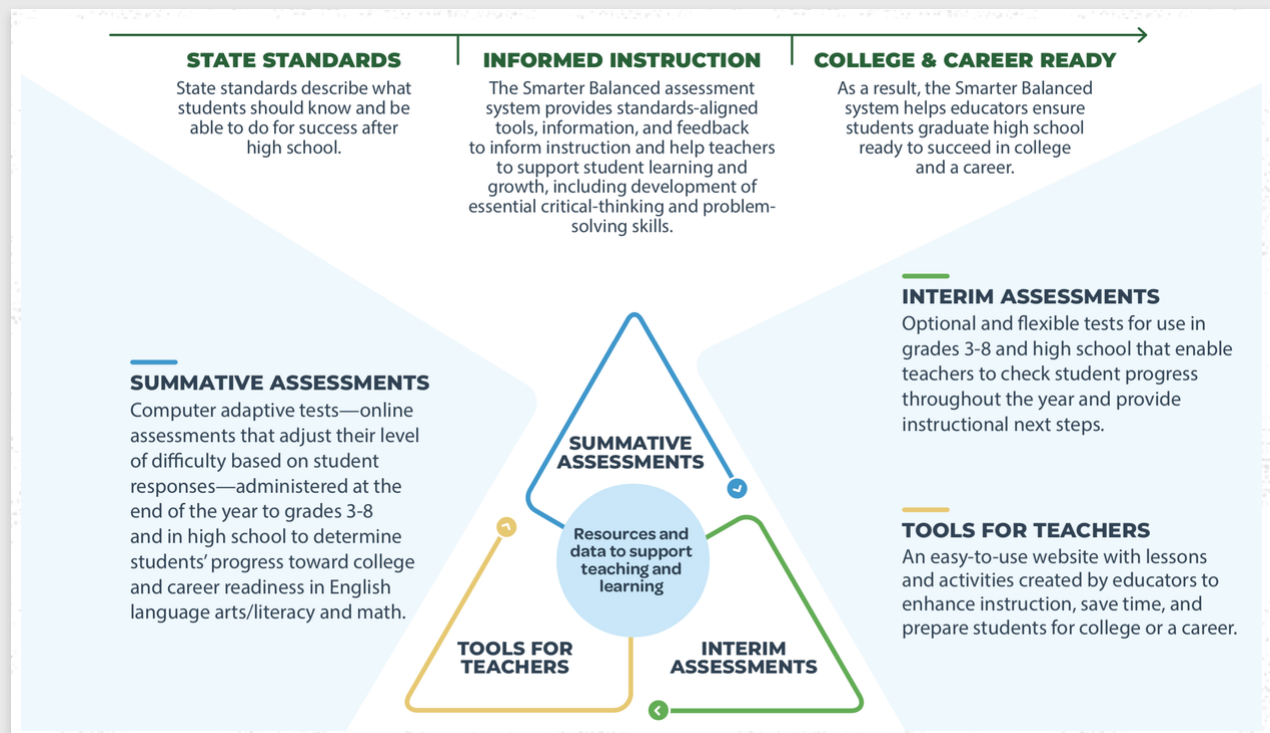
Mike, you're really not thinking about the ISAT, right? Actually yes as the ISAT is a comprehensive system of formative, interim, and summative assessments meant to support instruction throughout the year instead of a single assessment in the spring.



All current students as of October 1st have been [uploaded to the system](#) allowing teachers to access "Tools for Teachers" with its powerful database of lesson plans and ideas for meeting

the standards, a variety of formative and interim assessments, and information on the English, mathematics, and science summative tests that we'll deliver in the early spring.

If instructors are planning to give an interim assessment, they will need to take the [TA Certification Course](#). Also, passwords are automatically reset annually - if you have an existing account, click the "forgot password" link. For assistance and support, please reach out to Mike Nelson (msnelson@cdaschools.org) or use their interactive [Help Center](#).



BE-LEAF IT; GREAT REPORTS AVAILABLE

I-READY (MATHEMATICS GRADES KG-05)

Students in grades KG-08 took their initial i-Ready diagnostic assessment within the first 4 weeks of the school year and now have access to personalized licenses which deliver content based on identified areas of need. **Please note that students will not be able to access instructional licenses until after the diagnostic is complete.**



As a reminder, the diagnostic is an adaptive assessment where students receive questions on grade level and subsequently easier/more challenging questions based on their pattern of responses. Once taken, you will also be able to see progress monitoring charts with each month's optional growth checks and the three diagnostic windows which will inform you of areas of emphasis before the ISAT in the spring.

[Printing Growth Monitoring Reports](#)

The i-Ready Diagnostic & Instruction program is a two-part product that includes online assessments and online instruction. Reports can be viewed under the reports menu and then you can choose results by school, class, or student - depending on your role. For reports assistance, navigate to <http://i-readycentral.com/>



ISTATION - (ENGLISH LANGUAGE ARTS/LITERACY GRADES KG-05)

In this assessment, our students in grades KG-03 (ISIP Early Reading) and 04-05 (IStation Advanced Reading) took a progress monitoring assessment on the same domains of reading at the beginning of the year (varies by grade level): listening comprehension, letter knowledge, vocabulary, phonological/phonemic awareness, alphabetic decoding, and oral reading fluency.

Looking at Reports

Which reports might you want to review? Try these all linked at [My CDA Schools](#) > IStation > Reports, including the:

- [Classroom Summary](#) - provides student performance data from the most recently completed ISIP™ Assessment
- [Priority Report](#) - to identify students who will benefit from further intervention and provides links to teacher-directed lessons and supplemental materials.
- [ISIP Summary](#) - shows the number and percentage of students in the classroom at each instructional tier for each skill assessed

ILLUMINATE FASTBRIDGE (ELA/MATH GRADES 06-12)

Students in middle and high school English language arts and mathematics experienced their first Illuminate Fastbridge assessments.

The best report to start with is the "group screening" report (FastBridge > Reports > Group Screening > (choose aReading/aMath)). You will be able to see the list of your students by grade level and see two indicators - how they performed relative to others taking the same test in the same grade level in the same window (norms) and how their knowledge of content compares to end of year standards (benchmarks). You can adjust that view on the right side of the screen.

Want to know about Fastbridge and how to immediately use the results to target instruction? Log into Fastbridge through [Clever](#) and the "Training and Resources" tab. Then click "FastFlix"

to access quick videos and resources on this quick but powerful tool.



DON'T BE CORN-FUSED... REACH OUT

@cdaguyinbowtie

Our team is very willing to support you at any time. Reach out as you may need support.

1400 North Northwood Center ...

10006

msnelson@cdascschools.org

my.cdaschools.org

